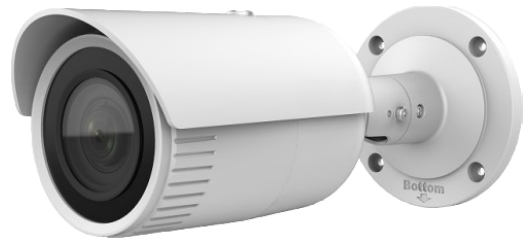




IP Scope 2K Camera CIPB4IR28-120



- 4MP CMOS 2560 x 1440 resolution
- Smart IR illumination
- 50 m illumination distance
- 2.8 – 12 mm motorized varifocal lens
- IP67 12VDCP



Category	Specification
Camera	
Image Sensor	1/3" Progressive Scan CMOS
Max. Resolution	2560 × 1440
Min. Illumination	Color: 0.005 Lux @ (F1.6, AGC on); B/W: 0 Lux with IR
Shutter Speed	1/3 to 1/100,000 sec
Wide Dynamic Range	120 dB
Day & Night	IR Cut Filter
Angle Adjustment	Pan: 0° to 360°, tilt: 0° to 90°, rotation: 0° to 360°
Lens	
Lens Type	Motorized varifocal lens, 2.8 to 12 mm
Focal Length & FOV	Horizontal: 102° to 31° Vertical: 55° to 18° Diagonal: 122° to 36°
Lens Mount	Ø 14
Iris Type	Fixed
Aperture	F1.6
Illuminator	
IR Wavelength	850 nm
IR Range	Up to 164 ft (50 m)
Video	
Main Stream	50 Hz: 20 fps (2560 × 1440) 25 fps (2304 × 1296, 1920 × 1080, 1280 × 720)
	60 Hz: 20 fps (2560 × 1440) 30 fps (2304 × 1296, 1920 × 1080, 1280 × 720)
Sub-Stream	50 Hz: 25 fps (1280 × 720, 640 × 480, 640 × 360) 60 Hz: 30 fps (1280 × 720, 640 × 480, 640 × 360)
Video Compression	Main stream: H.264 / H.264+ / H.265 / H.265+ Sub-stream: MJPEG / H.264 / H.265
Video Bitrate	32 Kbps to 8 Mbps
H.264 Type	Baseline Profile / Main Profile / High Profile
H.265 Type	Main Profile
Region of Interest (ROI)	1 fixed region for main stream

Network	
Protocols	TCP/IP, ICMP, HTTP, HTTPS, FTP, DHCP, DNS, DDNS, RTP, RTSP, RTCP, NTP, UPnP™, SMTP, IGMP, 802.1X, QoS, IPv6, Bonjour, IPv4, UDP, SSL/TLS
Simultaneous Live View	Up to 6 channels
API	Open Network Video Interface, ISAPI
User / Host	Up to 32 users; 3 levels: administrator, operator, user
Web Browser	Plug-in required: IE 10+ Plug-in free: Chrome 57+, Firefox 52+ Local service: Chrome 57+, Firefox 52+
Imaging	
Image Settings	Saturation, brightness, contrast, sharpness, AGC, white balance adjustable by client software or web browser
Day / Night Switch	Auto, Schedule, Day, Night
Image Enhancement	BLC, 3D DNR
Interface	
Ethernet Interface	1 RJ45 10M/100M self-adaptive Ethernet port
On-Board Storage	Built-in microSD slot, up to 256 GB
Reset Key	Yes
Event Types	
Basic Events	Motion detection, video tampering alarm, exception
Linkage	Upload to FTP, notify surveillance center, send email, upload to memory card, trigger recording, trigger capture

General	
Power	12 VDC \pm 25%, 0.9 A, max. 11 W PoE: 802.3 af, Class 3, 36 V to 57 V, 0.36 A to 0.23 A, max. 12.9 W
Camera Material	Metal
Camera Dimensions	\varnothing 4.1 \times 9.6 in. (\varnothing 105 \times 244.4 mm)
Package Dimensions	12.4 \times 5.4 \times 5.6 in. (315 \times 137 \times 141 mm)
Camera Weight	Approx. 2.3 lbs (1,035 g)
Shipping Weight	Approx. 3.4 lbs (1,550 g)
Storage Conditions	-22° to 140° F (-30° to 60° C); Humidity \leq 95% (non-condensing)
Operating Conditions	-22° to 140° F (-30° to 60° C); Humidity \leq 95% (non-condensing)
General Functions	Anti-flicker, heartbeat, mirror, password protection, privacy mask, watermark, IP address filter
Certifications	
EMC	FCC SDoC (47 CFR Part 15, Subpart B) CE-EMC (EN 55032: 2015, EN 61000-3-2: 2014, EN 61000-3-3: 2013, EN 50130-4: 2011 +A1: 2014)
	RCM (AS/NZS CISPR 32: 2015), IC VoC (ICES-003: Issue 6, 2016), KC (KN 32: 2015, KN 35: 2015)
Safety	UL (UL 60950-1) CB (IEC 60950-1:2005 + Am 1:2009 + Am 2:2013 IEC 62368-1:2014) CE-LVD (EN 60950-1:2005 + Am 1:2009 + Am 2:2013)
Environmental	CE-RoHS (2011/65/EU) WEEE (2012/19/EU) Reach (Regulation (EC) No 1907/2006)
Protection Level	IP67 (IEC 60529-2013)
Accessories (Optional)	
Junction Box	RFB801
Vertical Pole Mount	RFB378
Junction Box	RFB801-A
Corner Mount	RFB379